



Electrolux
PROFESSIONAL

Eco Preparation 1200 mm Storage Cabinet with sliding doors

ITEM # _____

MODEL # _____

NAME # _____

SIS # _____

AIA # _____



132886 (SAS12N)

Storage Cabinet, h. 1600mm,
with 3 shelves and 2 sliding
doors, 1200mm

Short Form Specification

Item No. _____

Constructed in stainless steel. Intermediate shelves, supports and inner doors in stainless steel. Handles are formed by a fold in the sliding doors. Adjustable feet.

Main Features

- Handles in stainless steel for better hygiene and reliability.
- Sturdiness, stability and reliability of table accurately tested.

Construction

- Handles directly built into the sliding doors.
- Constructed entirely in stainless steel to offer maximum durability.
- Base panel has 40mm high profile, is 8/10 in thickness with upturned edges and bar reinforcement. It is welded to legs for further structure reinforcement.
- Two double-walled sliding doors flush fitting to the front of the frame can be removed to facilitate cleaning of the cupboard interior.
- 304 AISI stainless steel feet, 150 mm high and 54 mm in diameter, adjustable by -35/+25 mm.

Optional Accessories

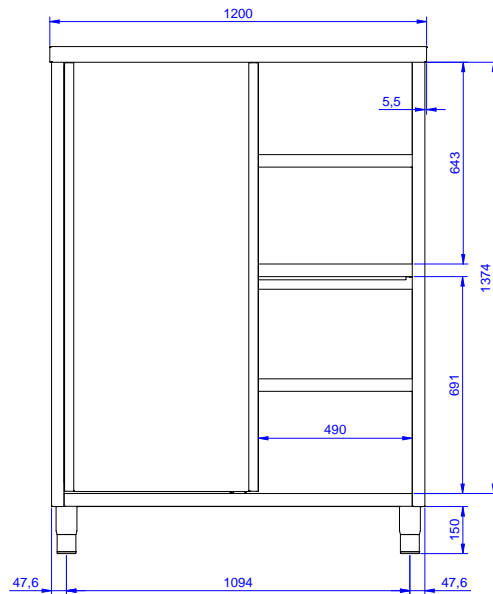
- Wheel kit for cupboards, 4 PNC 855299 ☐
wheels (2 with brakes), D=1000
mm

APPROVAL: _____

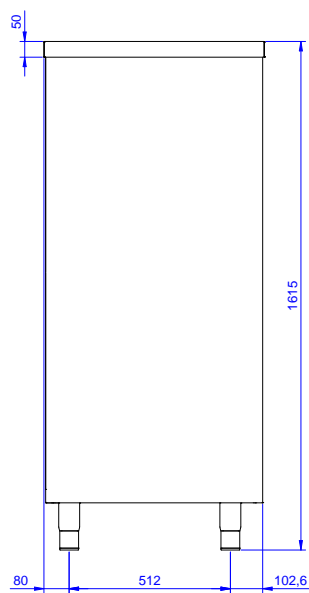


Experience the Excellence
www.electroluxprofessional.com

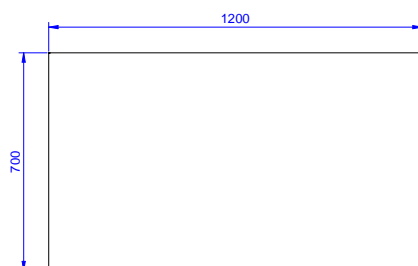
Front



Side



Top

**Key Information:**

Cabinet width:	
132886 (SAS12N)	1145 mm
Cabinet depth:	645 mm
Cabinet height:	1365 mm
External dimensions, Width:	1200 mm
External dimensions, Depth:	700 mm
External dimensions, Height:	1600 mm
Net weight:	115 kg